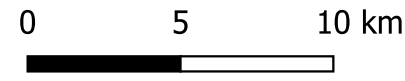
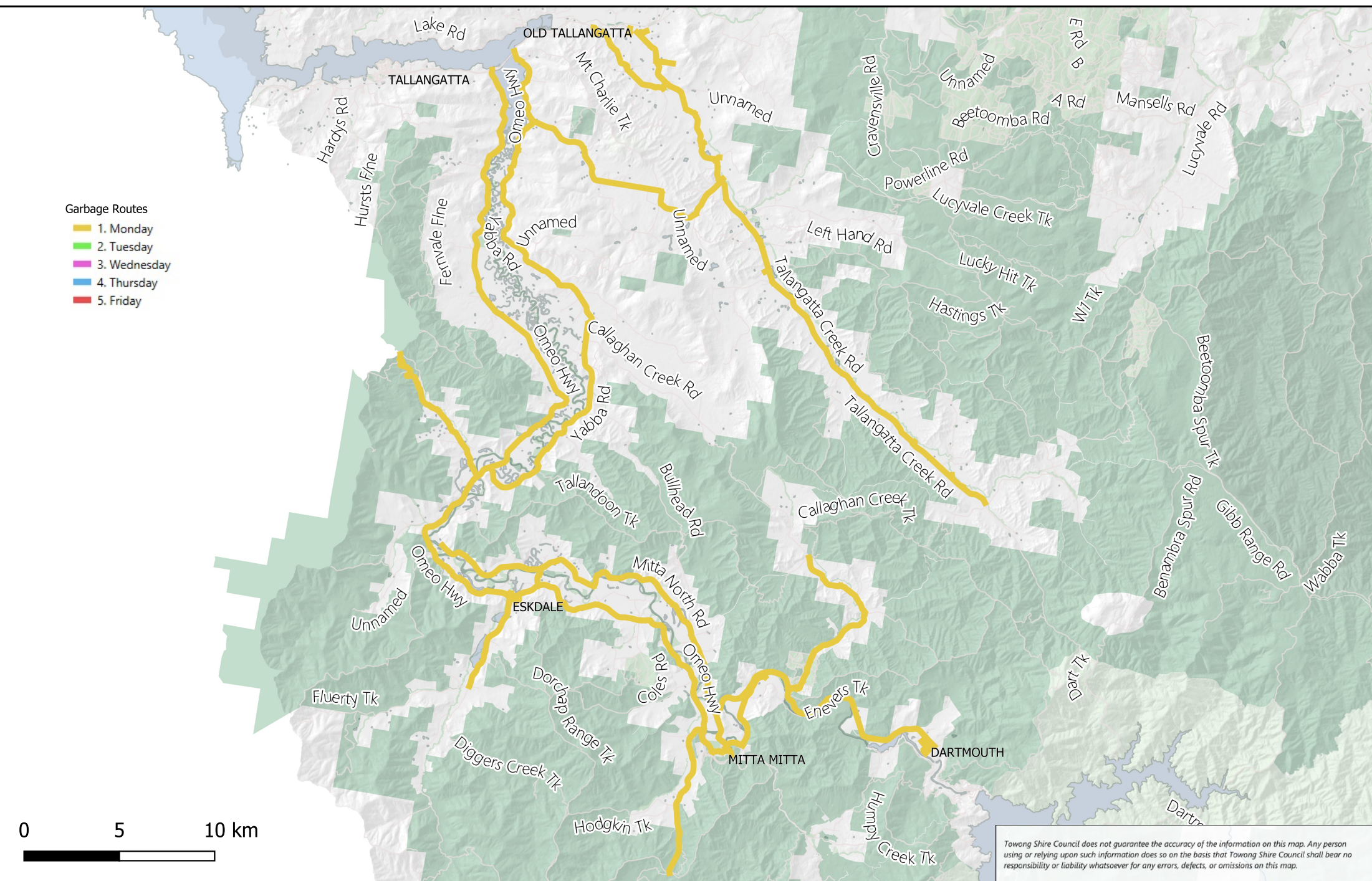
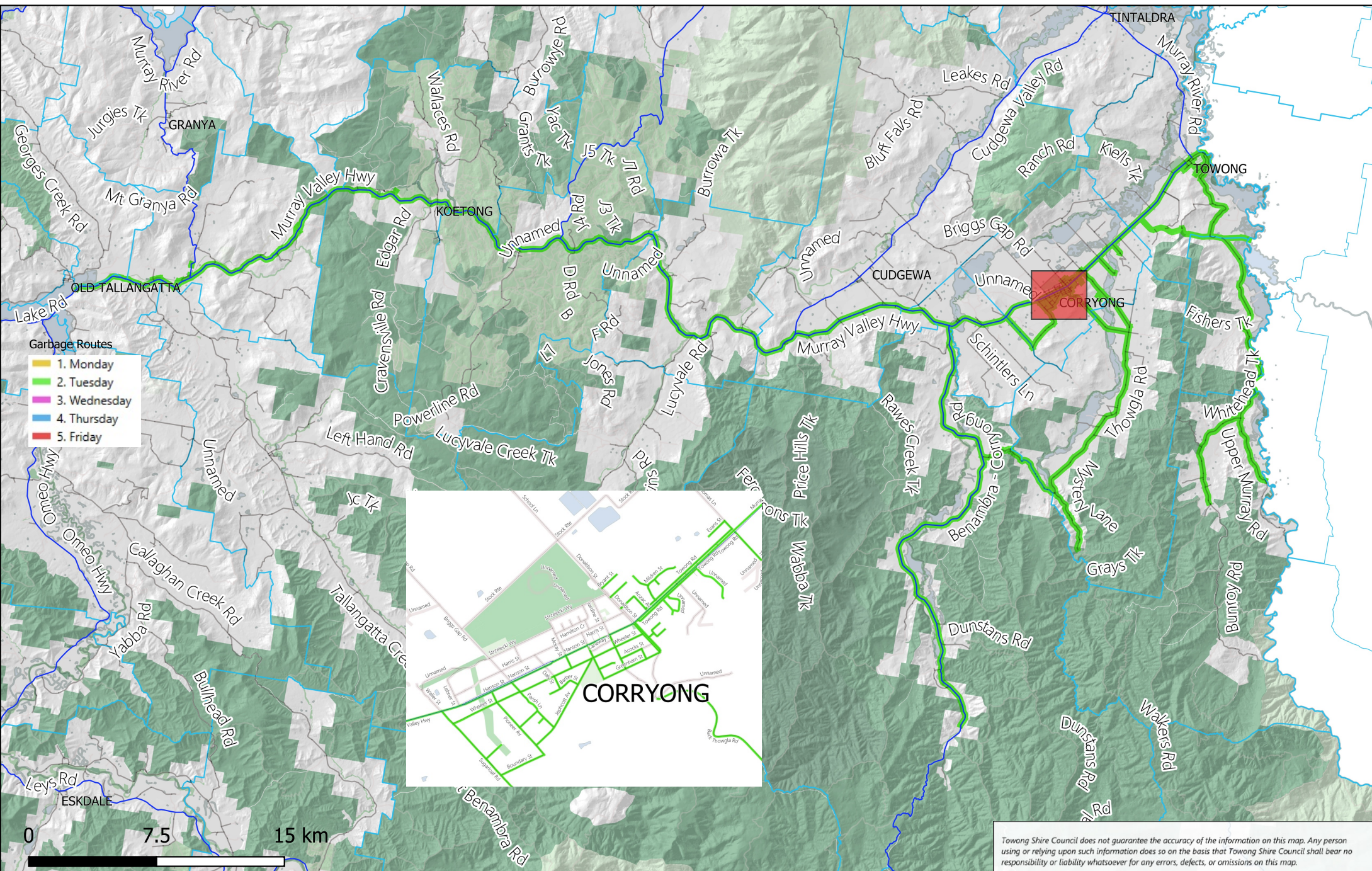


- Garbage Routes
- 1. Monday
  - 2. Tuesday
  - 3. Wednesday
  - 4. Thursday
  - 5. Friday



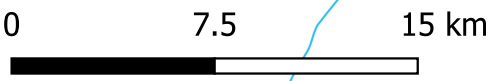
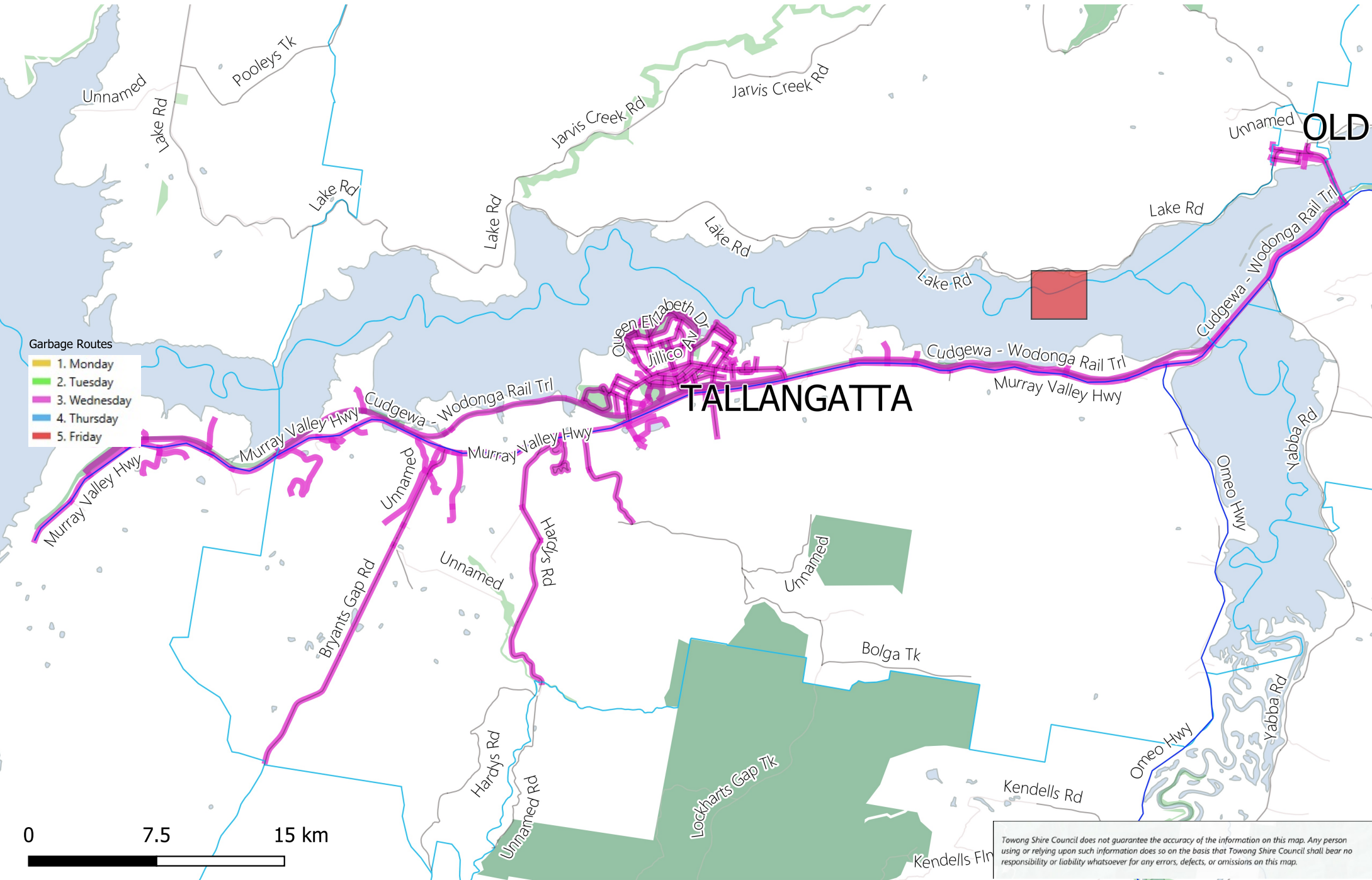
Towong Shire Council does not guarantee the accuracy of the information on this map. Any person using or relying upon such information does so on the basis that Towong Shire Council shall bear no responsibility or liability whatsoever for any errors, defects, or omissions on this map.





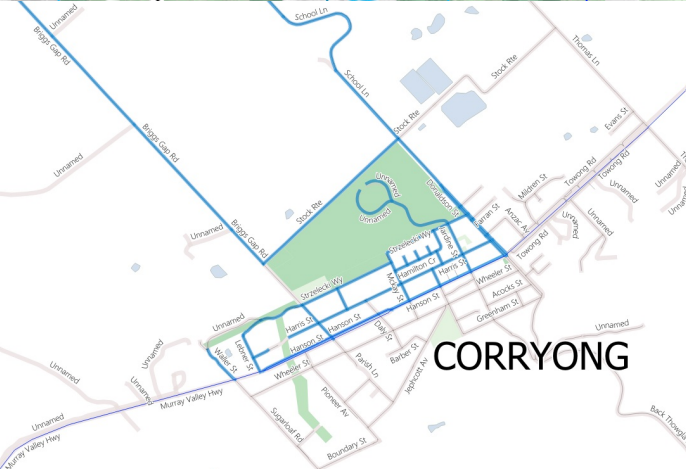
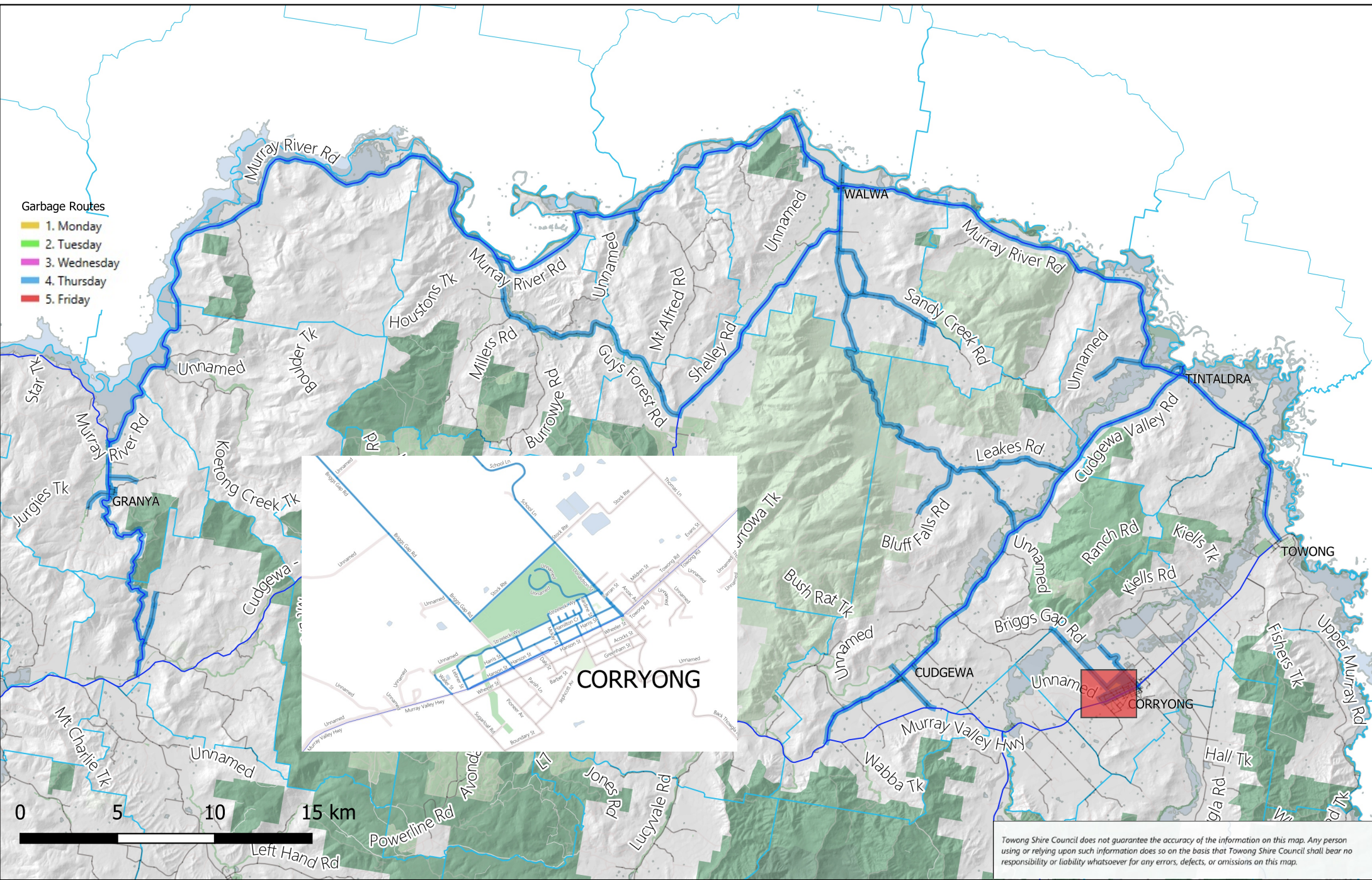
- Garbage Routes**
- 1. Monday
  - 2. Tuesday
  - 3. Wednesday
  - 4. Thursday
  - 5. Friday

Towong Shire Council does not guarantee the accuracy of the information on this map. Any person using or relying upon such information does so on the basis that Towong Shire Council shall bear no responsibility or liability whatsoever for any errors, defects, or omissions on this map.



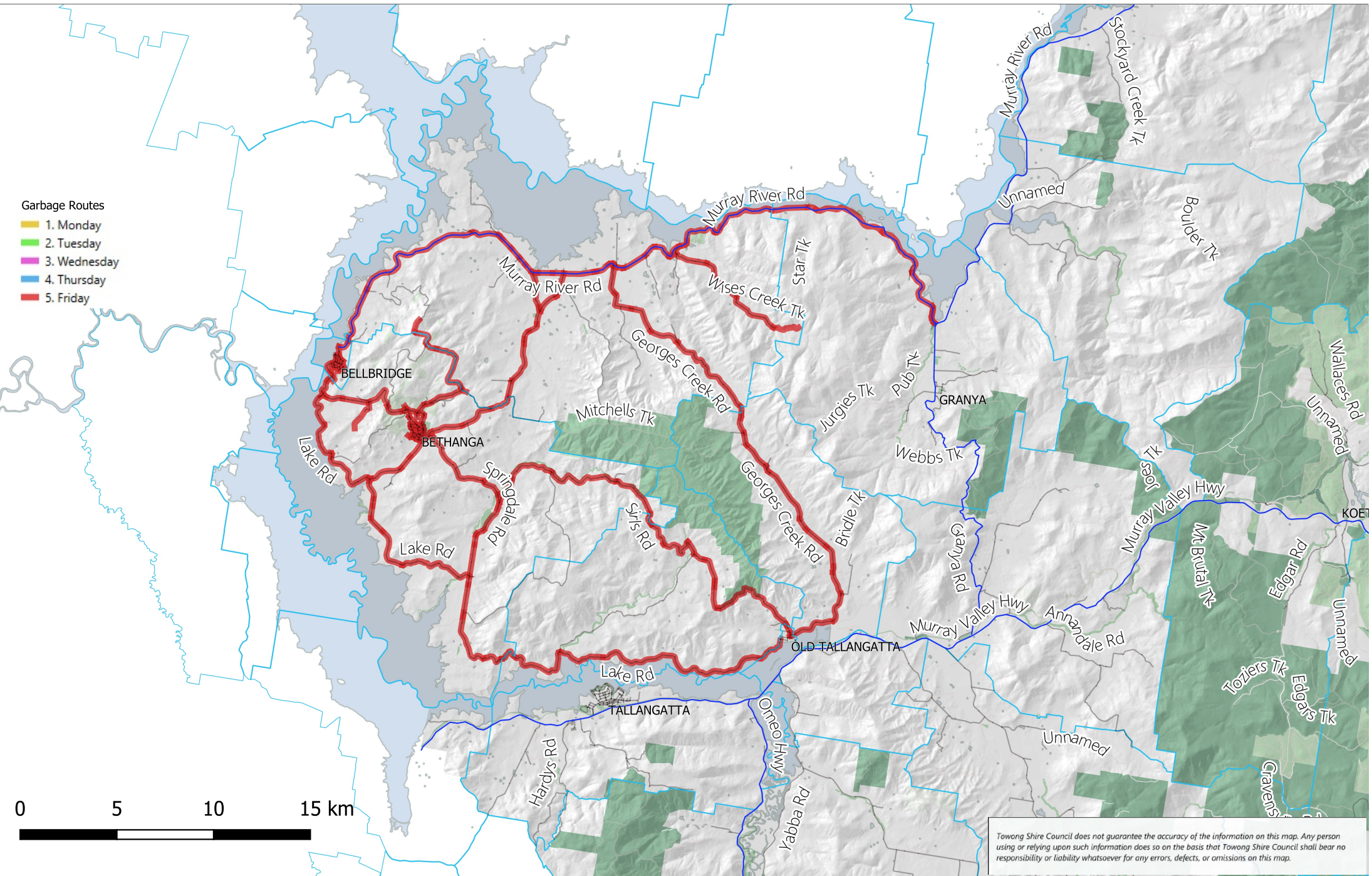
Towong Shire Council does not guarantee the accuracy of the information on this map. Any person using or relying upon such information does so on the basis that Towong Shire Council shall bear no responsibility or liability whatsoever for any errors, defects, or omissions on this map.

- Garbage Routes**
- 1. Monday
  - 2. Tuesday
  - 3. Wednesday
  - 4. Thursday
  - 5. Friday



*Towong Shire Council does not guarantee the accuracy of the information on this map. Any person using or relying upon such information does so on the basis that Towong Shire Council shall bear no responsibility or liability whatsoever for any errors, defects, or omissions on this map.*

- Garbage Routes**
- 1. Monday
  - 2. Tuesday
  - 3. Wednesday
  - 4. Thursday
  - 5. Friday



Towong Shire Council does not guarantee the accuracy of the information on this map. Any person using or relying upon such information does so on the basis that Towong Shire Council shall bear no responsibility or liability whatsoever for any errors, defects, or omissions on this map.

**June**

| Mo | Tu | We | Th | Fr | Sa | Su |
|----|----|----|----|----|----|----|
|    |    |    |    |    | 1  | 2  |
| 3  | 4  | 5  | 6  | 7  | 8  | 9  |
| 10 | 11 | 12 | 13 | 14 | 15 | 16 |
| 17 | 18 | 19 | 20 | 21 | 22 | 23 |
| 24 | 25 | 26 | 27 | 28 | 29 | 30 |

**July**

| Mo | Tu | We | Th | Fr | Sa | Su |
|----|----|----|----|----|----|----|
| 1  | 2  | 3  | 4  | 5  | 6  | 7  |
| 8  | 9  | 10 | 11 | 12 | 13 | 14 |
| 15 | 16 | 17 | 18 | 19 | 20 | 21 |
| 22 | 23 | 24 | 25 | 26 | 27 | 28 |
| 29 | 30 | 31 |    |    |    |    |

**August**

| Mo | Tu | We | Th | Fr | Sa | Su |
|----|----|----|----|----|----|----|
|    |    |    | 1  | 2  | 3  | 4  |
| 5  | 6  | 7  | 8  | 9  | 10 | 11 |
| 12 | 13 | 14 | 15 | 16 | 17 | 18 |
| 19 | 20 | 21 | 22 | 23 | 24 | 25 |
| 26 | 27 | 28 | 29 | 30 | 31 |    |

**September**

| Mo | Tu | We | Th | Fr | Sa | Su |
|----|----|----|----|----|----|----|
| 30 |    |    |    |    |    | 1  |
| 2  | 3  | 4  | 5  | 6  | 7  | 8  |
| 9  | 10 | 11 | 12 | 13 | 14 | 15 |
| 16 | 17 | 18 | 19 | 20 | 21 | 22 |
| 23 | 24 | 25 | 26 | 27 | 28 | 29 |

**October**

| Mo | Tu | We | Th | Fr | Sa | Su |
|----|----|----|----|----|----|----|
|    | 1  | 2  | 3  | 4  | 5  | 6  |
| 7  | 8  | 9  | 10 | 11 | 12 | 13 |
| 14 | 15 | 16 | 17 | 18 | 19 | 20 |
| 21 | 22 | 23 | 24 | 25 | 26 | 27 |
| 28 | 29 | 30 | 31 |    |    |    |

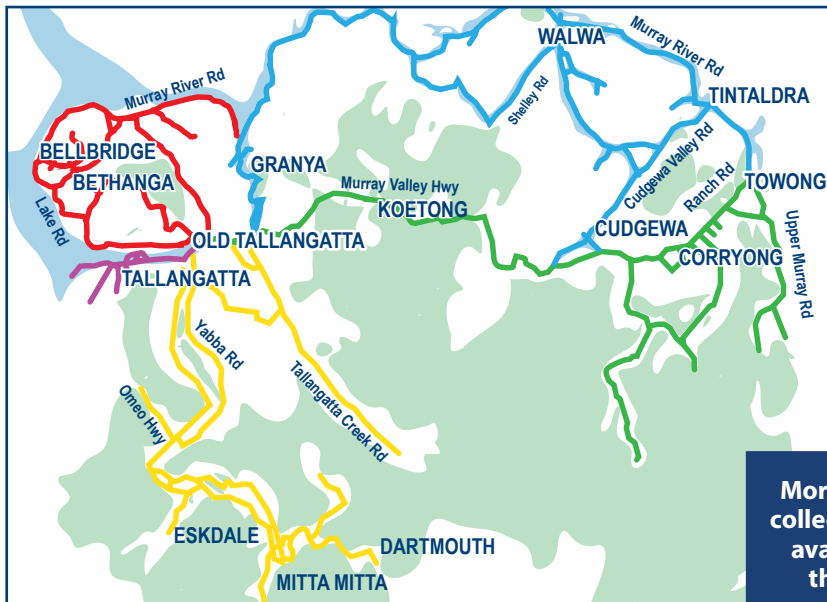
**November**

| Mo | Tu | We | Th | Fr | Sa | Su |
|----|----|----|----|----|----|----|
|    |    |    |    | 1  | 2  | 3  |
| 4  | 5  | 6  | 7  | 8  | 9  | 10 |
| 11 | 12 | 13 | 14 | 15 | 16 | 17 |
| 18 | 19 | 20 | 21 | 22 | 23 | 24 |
| 25 | 26 | 27 | 28 | 29 | 30 |    |

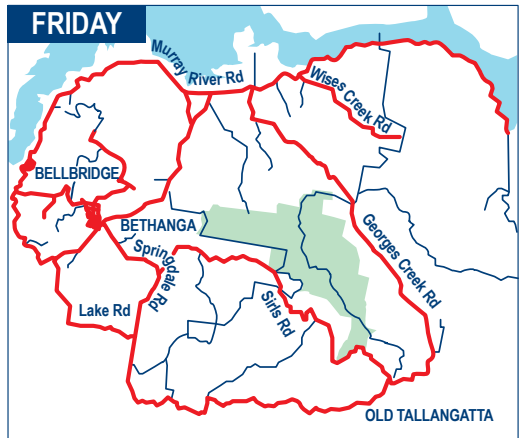
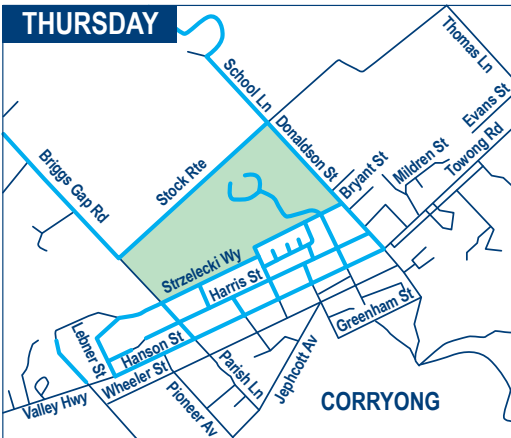
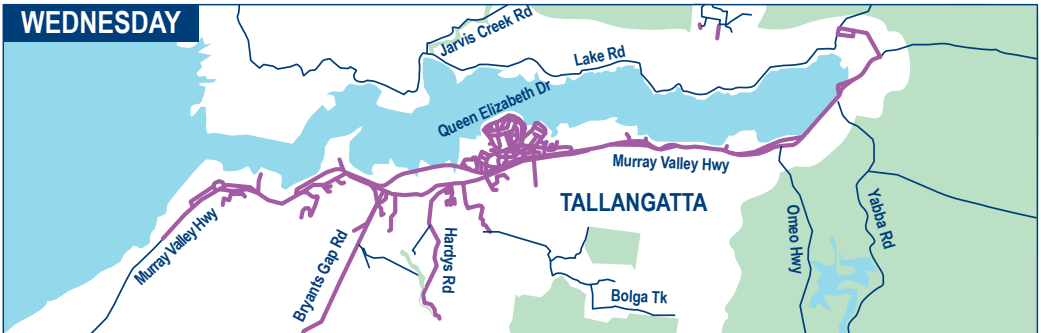
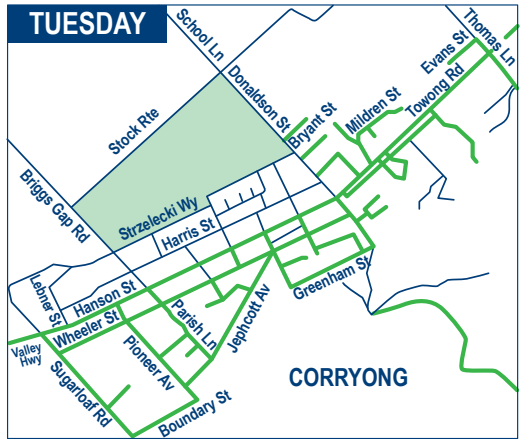
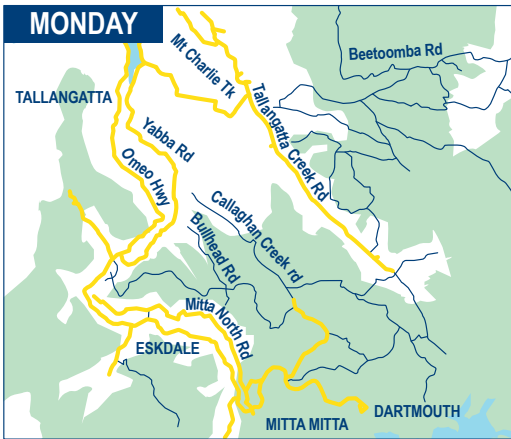
**December**

| Mo | Tu | We | Th | Fr | Sa | Su |
|----|----|----|----|----|----|----|
| 30 | 31 |    |    |    |    | 1  |
| 2  | 3  | 4  | 5  | 6  | 7  | 8  |
| 9  | 10 | 11 | 12 | 13 | 14 | 15 |
| 16 | 17 | 18 | 19 | 20 | 21 | 22 |
| 23 | 24 | 25 | 26 | 27 | 28 | 29 |

- Organics**  
Collected Weekly
- General Waste**  
Collected Fortnightly
- Recycling**  
Collected Fortnightly



More detailed collection maps available on the back.



To find out more contact Council on **1300 365 222** or visit [halvewaste.com.au](http://halvewaste.com.au)